

\$549,900 - 548 Chelsea Gardens, Chestermere

MLS® #A2263612

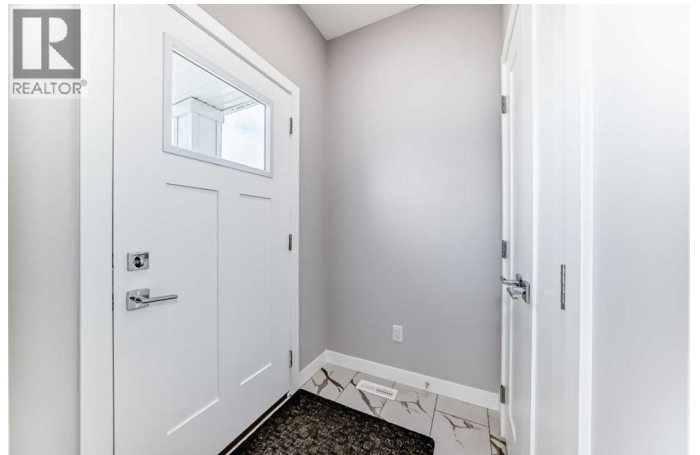
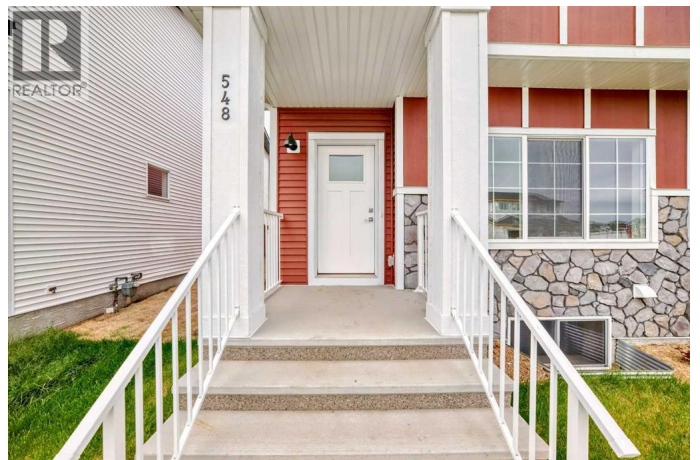
\$549,900

3 Bedroom, 3.00 Bathroom, 1,481 sqft

Single Family on 0.07 Acres

Chelsea, Chestermere, Alberta

*****DOUBLE CAR GARAGE INCLUDED***** This is your chance to own a beautifully designed, BRAND NEW construction home in CHELSEA, CHESTERMERE!!! The BRAND NEW HOME boasts 3 BEDROOMS, 2.5 BATHROOMS, SEPARATE ENTRANCE TO THE BASEMENT and DOUBLE CAR GARAGE. As you enter, you'll be greeted with 9'Ft ceiling open floor plan that seamlessly connects, the LIVING ROOM perfect for family gatherings, DINING AREA, FULLY UPGRADED KITCHEN and a HALF WASHROOM. Inside the home is packed with premium finishes, including QUARTZ COUNTERTOPS and KNOCKDOWN CEILINGS throughout, creating a stylish and modern feel from the moment you walk in. The kitchen is chef's delight with CHIMNEY HOOD FAN PACKAGE, QUARTZ COUNTERTOP, upgraded STAINLESS STEEL APPLIANCES, having KITCHEN CABINETS UPTO THE CEILING with an ample space and a SEPARATE PANTRY. Upstairs you will find PRIMARY BEDROOM with its own WALK-IN CLOSET and 3PC ENSUITE with STANDING SHOWER with tiles up to the ceiling, two other BEDROOMS and a common 4PC BATHROOM. The conveniently located hallway laundry adds a practical touch. The common bathroom offers an inviting soaking tub and quartz countertop. The unfinished BASEMENT has SEPARATE SIDE ENTRANCE offers an endless possibilities to develop it for your personal leisure or to rent it



. The FRONT YARD IS FULLY LANDSCAPED and the backyard has ample of space for your creative landscaping ideas and also has a BBQ GAS LINE connection to enjoy the bbq with your beloved family. The DETACHED DOUBLE CAR GARAGE has a easy access from paved back alley. With a new home warranty in place and located near an array of amenities, this is the perfect combination of style, comfort and convenience. It's about being part of a vibrant, family friendly community. With a greenspace, tranquil wetlands, parks and future plans for a school and recreational facilities, there's something for everyone. (id:6289)

Built in 2024

Essential Information

Listing #	A2263612
Price	\$549,900
Bedrooms	3
Bathrooms	3.00
Half Baths	1
Square Footage	1,481
Acres	0.07
Year Built	2024
Type	Single Family
Sub-Type	Freehold

Community Information

Address	548 Chelsea Gardens
Subdivision	Chelsea
City	Chestermere
Province	Alberta
Postal Code	T1X2V5

Amenities

Amenities	Park, Playground, Schools, Shopping
Features	No Animal Home, No Smoking Home, Level, Gas BBQ Hookup

Parking Spaces	4
Parking	Detached Garage, Street
# of Garages	2

Interior

Appliances	Washer, Refrigerator, Range - Gas, Dishwasher, Dryer, Microwave
Heating	Forced air
Cooling	None
# of Stories	2
Basement	Separate entrance

Exterior

Exterior	Vinyl siding
Foundation	Poured Concrete

Listing Details

Listing Office	Royal LePage METRO
----------------	--------------------



The trademarks MLS®, Multiple Listing Service® and the associated logos are owned by The Canadian Real Estate Association (CREA) and identify the quality of services provided by real estate professionals who are members of CREA. REALTOR®. Member of CREA and more.

Listing information last updated on October 12th, 2025 at 9:31pm CDT