

\$579,800 - 6909 51 Av, Beaumont

MLS® #E4460120

\$579,800

4 Bedroom, 3.00 Bathroom, 1,868 sqft
Single Family

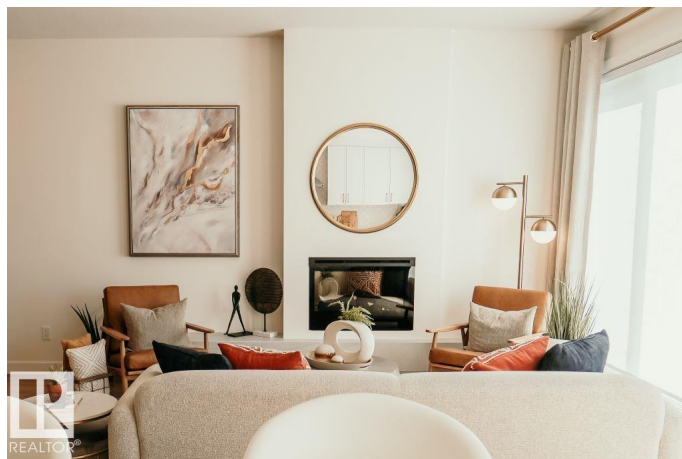
Elan, Beaumont, Alberta

Welcome to the Family Thrive 24, a home that provides abundant space for teenagers to blossom alongside parents seeking comfort and practicality. The main floor living space offers a cohesive open-concept kitchen, living and dining room layout. It includes a bedroom with full bath. The kitchen with adjoining walk-through pantry provides storage and space for prepping meals together. Upstairs youâ€™ll find expansive secondary bedrooms with walk in closets and well appointed second floor laundry room, catering perfectly to the needs of active families. A sizeable family room is the perfect space for movie nights relaxing together as a family. The separate side entrance. spindled railing and 9' basement ceilings are an added bonus! Experience a home where every detail supports your familyâ€™s evolution, creating cherished moments in a setting that embraces your familyâ€™s lifestyle. UNDER CONSTRUCTION! *photos are for representation only. Colors and finishing may vary* (id:6289)

Built in 2025

Essential Information

Listing #	E4460120
Price	\$579,800
Bedrooms	4
Bathrooms	3.00



Square Footage	1,868
Year Built	2025
Type	Single Family
Sub-Type	Freehold

Community Information

Address	6909 51 Av
Subdivision	Elan
City	Beaumont
Province	Alberta
Postal Code	T4X3E4

Amenities

Amenities	Schools
Features	See remarks
Parking	Attached Garage
# of Garages	1

Interior

Appliances	Dishwasher, Garage door opener remote(s), Garage door opener, Hood Fan, Microwave, Refrigerator, Stove
Heating	Forced air
# of Stories	2

Listing Details

Listing Office	Mozaic Realty Group
----------------	---------------------



The trademarks MLS®, Multiple Listing Service® and the associated logos are owned by The Canadian Real Estate Association (CREA) and identify the quality of services provided by real estate professionals who are members of CREA. REALTOR®. Member of CREA and more.

Listing information last updated on October 12th, 2025 at 1:31pm CDT