

\$1,575,000 - Rr14 & 15 Between Hwy 616 & Hwy 616x, Rural Leduc County

MLS® #E4461047

\$1,575,000

0 Bedroom, 0.00 Bathroom,
Vacant Land on 236.88 Acres

None, Rural Leduc County, Alberta

Amazing opportunity to own 236.88 acres â€“
Three parcels of 161 acres, 55.76 acres and
20.12 acres each. - 161 acres are located on
RR14 between HWY616 and HWY 616X. Half
a mile north of PIGEONS LAKE. It is a CROP
LAND. - 55.76 acres are located on SE
Corner of RR15 & HWY 616 (TWPR 480).
These are ROLLING LANDS. Good for HAY
and PASTURE. - 20.12 acres are located
adjoining to 55.76 acres (South of 55.76 acres
on RR15) on RR15 between HWY 616 & HWY
616X by PIGEONS LAKE. These are CROP
LANDS. (id:6289)

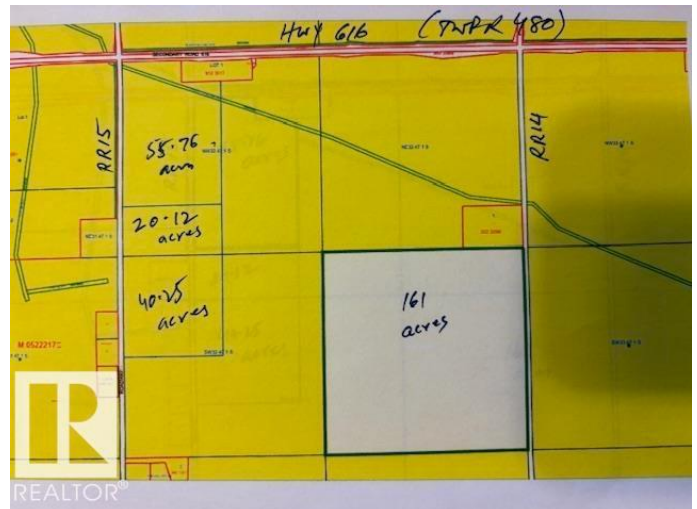
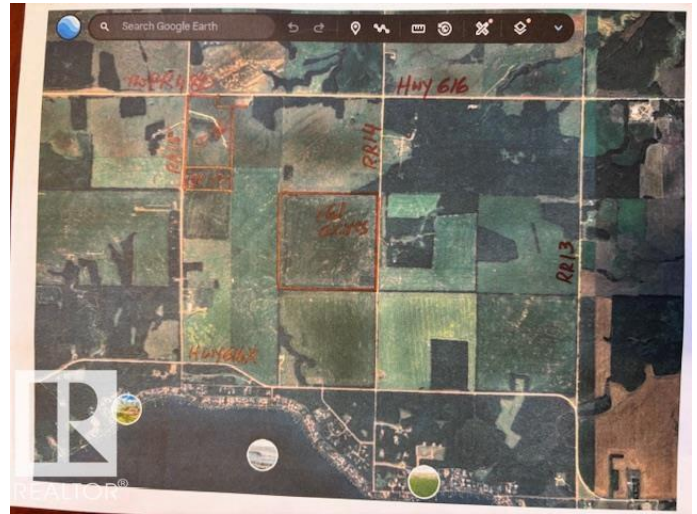
Essential Information

Listing #	E4461047
Price	\$1,575,000
Bathrooms	0.00
Acres	236.88
Type	Vacant Land

Community Information

Address	Rr14 & 15 Between Hwy 616
Subdivision	None
City	Rural Leduc County
Province	Alberta
Postal Code	T9E2P0

Amenities



Features

Agriculture

Listing Details

Listing Office Century 21 All Stars Realty Ltd



The trademarks MLS®, Multiple Listing Service® and the associated logos are owned by The Canadian Real Estate Association (CREA) and identify the quality of services provided by real estate professionals who are members of CREA. REALTOR®. Member of CREA and more.

Listing information last updated on October 13th, 2025 at 6:31pm CDT