

# \$954,900 - 2705 64 Av Ne, Rural Leduc County

MLS® #E4461140

**\$954,900**

5 Bedroom, 4.00 Bathroom, 2,700 sqft

Single Family on 0.12 Acres

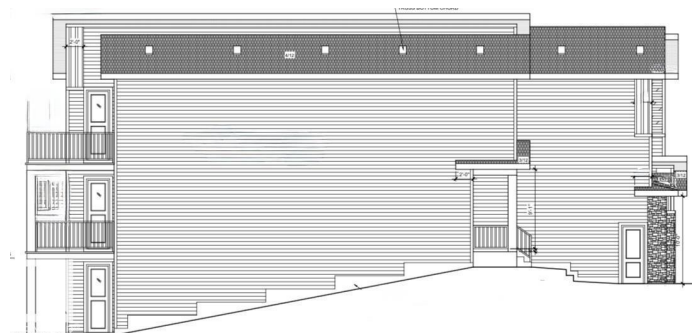
Churchill Meadow, Rural Leduc County, Alberta

Step inside your future dream home in CHURCHILL MEADOWS! through double doors into soaring 9ft ceilings and two open-to-below spaces. that instantly impresses. Dark vinyl siding with board & batten accents sets the tone of elegance. The chef's kitchen features a waterfall island, matte black sinks, extended counters, and a spice kitchen, all illuminated by pot lights and dimmers. Entertain with rough-ins for speakers and cozy up by the electric fireplace. Downstairs, the finished walkout basement offers 2 bedrooms and 1 bath—perfect for guests, a suite, or rental income. Outside, enjoy a sidewalk and concrete steps on this beautiful walkout lot. Every corner reflects premium craftsmanship—modern luxury at its finest. (id:6289)

Built in 2025

## Essential Information

Listing #	E4461140
Price	\$954,900
Bedrooms	5
Bathrooms	4.00
Square Footage	2,700
Acres	0.12
Year Built	2025
Type	Single Family



## Community Information

Address	2705 64 Av Ne
Subdivision	Churchill Meadow
City	Rural Leduc County
Province	Alberta
Postal Code	T4X2C1

## Amenities

Amenities	Airport, Golf Course, Playground, Ceiling - 9ft
Features	No Animal Home, No Smoking Home
Parking	Attached Garage
# of Garages	1

## Interior

Heating	Forced air
Fireplace	Yes
Fireplaces	Electric
# of Stories	2
Has Basement	Yes
Basement	Unknown

## Listing Details

Listing Office	MaxWell Polaris
----------------	-----------------



The trademarks MLS®, Multiple Listing Service® and the associated logos are owned by The Canadian Real Estate Association (CREA) and identify the quality of services provided by real estate professionals who are members of CREA. REALTOR®. Member of CREA and more.

Listing information last updated on October 13th, 2025 at 6:16pm CDT