

\$104,900 - #301 10035 164 St Nw, Edmonton

MLS® #E4464484

\$104,900

2 Bedroom, 1.00 Bathroom, 936 sqft
Single Family on 0.03 Acres

Glenwood (Edmonton), Edmonton, Alberta

Top Floor Corner unit! This two bedroom condo is located close to shopping and transit! Great location and affordable, this 936 sq/ft home boasts a large master bedroom, in suite storage space, same floor laundry, and a spacious balcony. Colleen Manor is pet friendly (with board approval) and has had its windows replaced. Condo fees are \$628.24/mth and comes with one assigned parking stall. (id:6289)

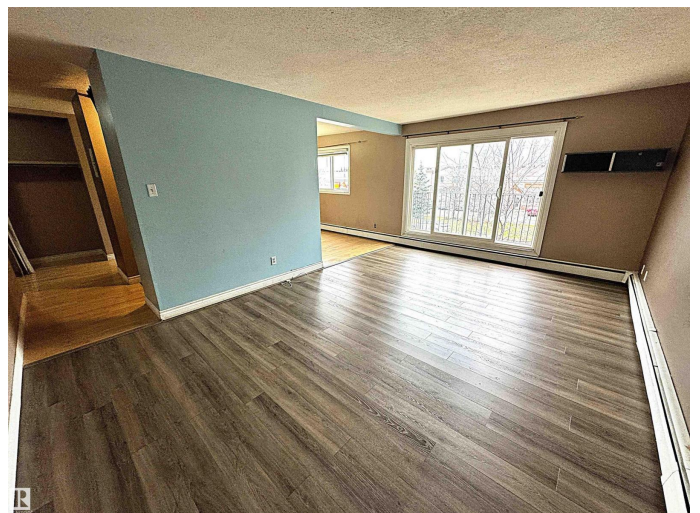
Built in 1975

Essential Information

Listing #	E4464484
Price	\$104,900
Bedrooms	2
Bathrooms	1.00
Square Footage	936
Acres	0.03
Year Built	1975
Type	Single Family
Sub-Type	Condominium/Strata

Community Information

Address	#301 10035 164 St Nw
Subdivision	Glenwood (Edmonton)
City	Edmonton
Province	Alberta
Postal Code	T5P4L4



Amenities

Amenities	Shopping, Vinyl Windows
Features	See remarks, Lane
Parking	Stall

Interior

Appliances	Refrigerator, See remarks
Heating	Hot water radiator heat

Listing Details

Listing Office RE/MAX Real Estate



The trademarks MLS®, Multiple Listing Service® and the associated logos are owned by The Canadian Real Estate Association (CREA) and identify the quality of services provided by real estate professionals who are members of CREA. REALTOR®. Member of CREA and more.

Listing information last updated on November 4th, 2025 at 5:46am CST