

# \$3,400 - 4 - 745 Farmstead Drive, Milton (wi Willmott)

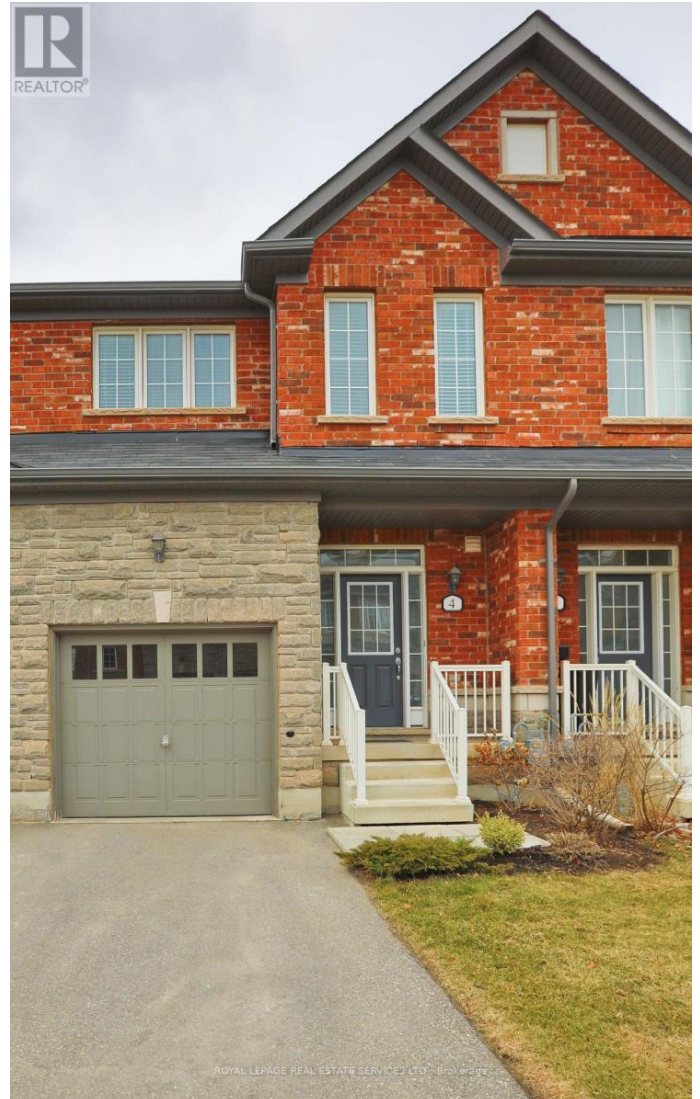
MLS® #W12449135

**\$3,400**

3 Bedroom, 3.00 Bathroom,  
Single Family

1038 - WI Willmott, Milton (wi Willmott),  
Ontario

Enjoy peaceful, comfortable living in this beautifully maintained executive walkout townhouse, backing directly onto private, lush greenspace a rare offering in the desirable Willmott neighbourhood. This bright and spacious home features 9 ft ceilings and an open-concept main floor with hardwood floors and an elegant oak staircase. The large kitchen offers stainless steel appliances, granite countertops, and plenty of cabinet space ideal for daily living and meal preparation. Step out from the main floor onto your private deck with calming views of the surrounding greenery a perfect spot to start your day or wind down in the evening. The walkout basement provides additional living space with direct access to a generously sized backyard, ideal for quiet enjoyment of the outdoors. Upstairs, you'll find three bedrooms, including a spacious primary suite with a walk-in closet and a private ensuite bathroom. This home offers a harmonious blend of comfort, functionality, and natural surroundings all in one exceptional location. A unique leasing opportunity not to be missed! (id:6289)



## Essential Information

Listing #	W12449135
Price	\$3,400
Bedrooms	3

Bathrooms 3.00  
Half Baths 1  
Type Single Family  
Sub-Type Condominium/Strata

### Community Information

Address 4 - 745 Farmstead Drive  
Subdivision 1038 - WI Willmott  
City Milton (wi Willmott)  
Province Ontario  
Postal Code L9T8B1

### Amenities

Amenities Hospital, Public Transit, School  
Features Wooded area, Balcony  
Parking Spaces 2  
Parking Attached Garage, Garage  
# of Garages 2

### Interior

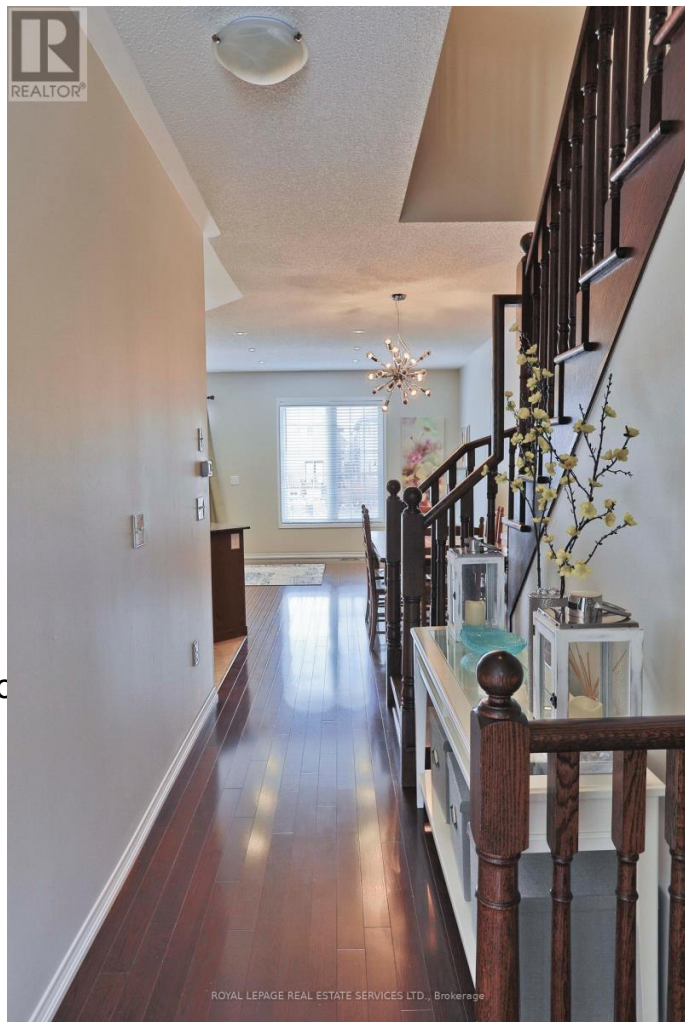
Appliances Dishwasher, Dryer, Stove, Washer, Refrigerator  
Heating Natural gas Forced air  
Cooling Central air conditioning  
# of Stories 2  
Basement Walk out

### Exterior

Exterior Brick, Stone

### Listing Details

Listing Office ROYAL LEPAGE REAL ESTATE SERVICES LTD.



The trademarks MLS®, Multiple Listing Service® and the associated logos are owned by The Canadian Real Estate Association (CREA) and identify the quality of services provided by real estate professionals who are members of CREA. REALTOR®. Member of CREA and more.

Listing information last updated on October 13th, 2025 at 6:46pm CDT