

# \$ - 27 - 7956 Torbram Road, Brampton (steeles Industrial)

---

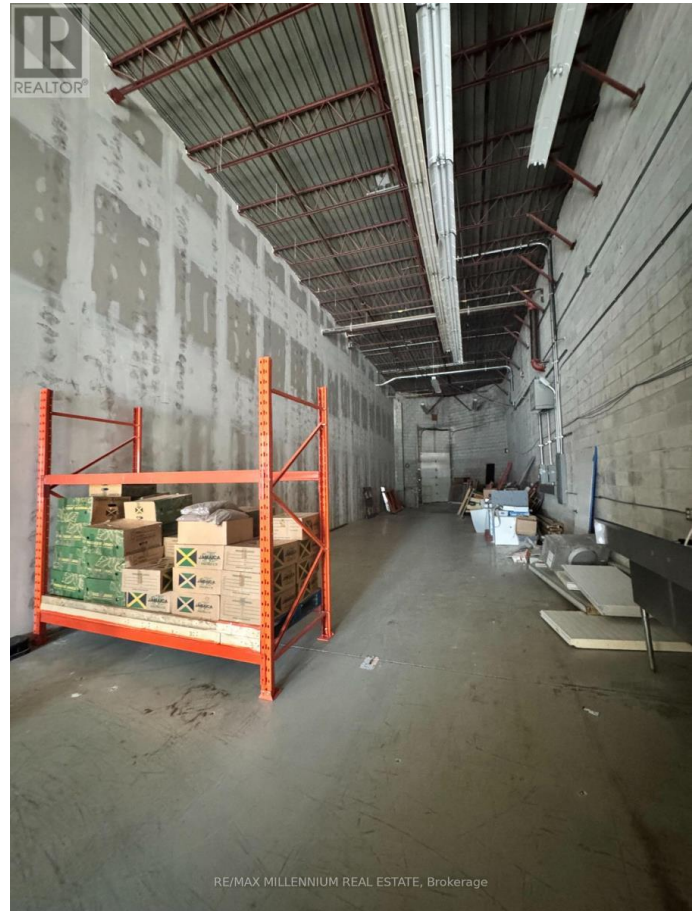
MLS® #W12451270

\$

0 Bedroom, 0.00 Bathroom, 2,298 sqft  
Industrial

Steeles Industrial, Brampton (steeles Industrial), Ontario

Excellent opportunity to lease almost 2,300 sq ft M1-zoned industrial/commercial unit in the sought after Torbram-Steeles Business Corridor. Features 19 ft 10 in clear height, rear level 12 ft truck level shipping door, and clear span warehouse space that accommodates a 53-ft trailer. Includes two exclusive parking spots and access to a large shared lot. Strategically located near Highways 407, 427, 410, 401, and Pearson Airport. M1 zoning permits warehousing, light manufacturing, assembly, e-commerce fulfillment, contractor offices, and more ideal for hybrid office-warehouse operations or growing industrial businesses. (id:6289)



## Essential Information

|                |            |
|----------------|------------|
| Listing #      | W12451270  |
| Bathrooms      | 0.00       |
| Square Footage | 2,298      |
| Type           | Industrial |

## Community Information

|             |                               |
|-------------|-------------------------------|
| Address     | 27 - 7956 Torbram Road        |
| Subdivision | Steeles Industrial            |
| City        | Brampton (steeles Industrial) |
| Province    | Ontario                       |
| Postal Code | L6T5A2                        |

**Amenities**

Parking Spaces      2

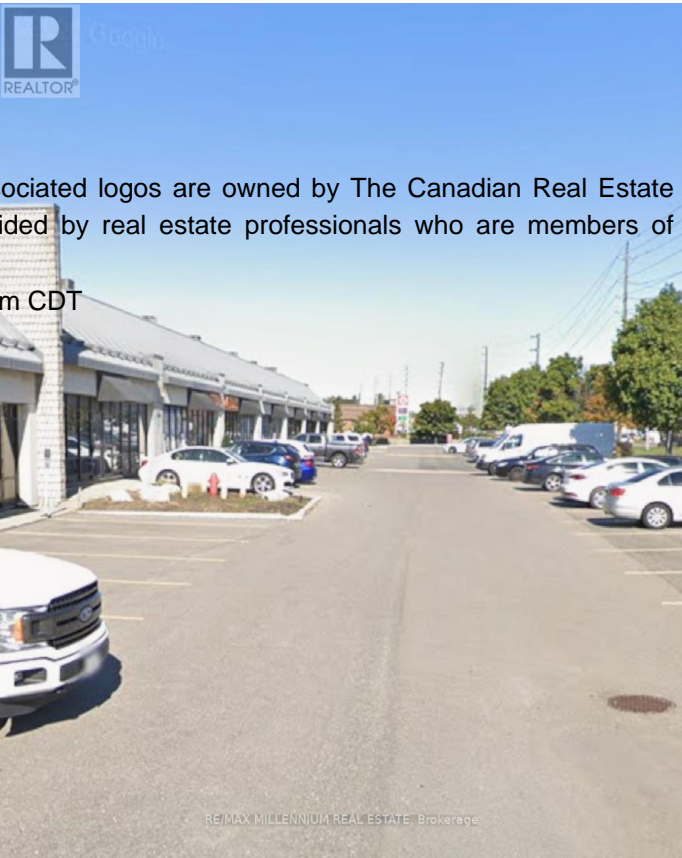
**Interior**

Heating                      Natural gas Forced air

Cooling                      Partially air conditioned

**Listing Details**

Listing Office              RE/MAX MILLENNIUM REAL E



The trademarks MLS®, Multiple Listing Service® and the associated logos are owned by The Canadian Real Estate Association (CREA) and identify the quality of services provided by real estate professionals who are members of CREA. REALTOR®. Member of CREA and more.

Listing information last updated on October 11th, 2025 at 7:02pm CDT