

\$875,000 - 2252 Zion Line, Whitewater Region

MLS® #X12387879

\$875,000

4 Bedroom, 2.00 Bathroom,
Agriculture

580 - Whitewater Region, Whitewater Region,
Ontario

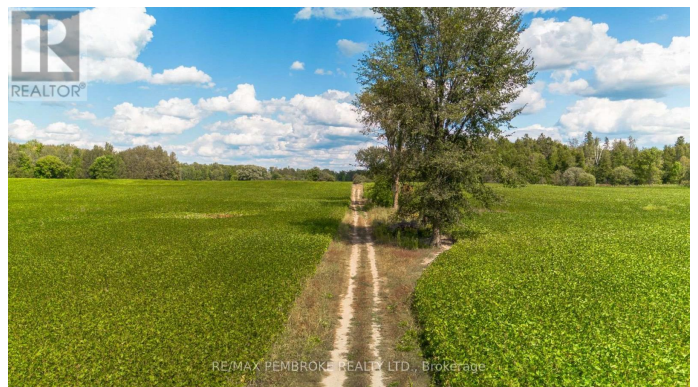
Check out this 102 acre farm on the outskirts of Beachburg only 15 minutes from Pembroke. The farm boasts an impressive 75 acres of highly productive, randomly tiled clay loam soil, ideal for a variety of crops. This year, enjoy a bumper crop of food-grade soybeans, showcasing the lands exceptional fertility and promise for future agricultural success. The property has a solid brick heritage four bedroom farmhouse and comes equipped with several outbuildings, offering ample space for storage or machinery including an expansive 36' x 75' insulated steel building with phase 3 power. Two creeks, two trout ponds and a mixed bush area complete the package. 48 hour irrevocable on offers. (id:6289)

Essential Information

Listing #	X12387879
Price	\$875,000
Bedrooms	4
Bathrooms	2.00
Type	Agriculture

Community Information

Address	2252 Zion Line
Subdivision	580 - Whitewater Region
City	Whitewater Region
Province	Ontario



Postal Code K8A6W3

Amenities

Utilities Cable, Electricity
Features Level lot, Wooded area, Flat site, Dry
Parking Spaces 10
Parking No Garage
View Valley view

Interior

Appliances Dryer, Stove, Washer, Refrigerator
Heating Propane Forced air
Fireplace Yes
of Fireplaces 1
of Stories 2

Exterior

Exterior Brick
Foundation Stone

Listing Details

Listing Office RE/MAX PEMBROKE REALTY LTD.



The trademarks MLS®, Multiple Listing Service® and the associated logos are owned by The Canadian Real Estate Association (CREA) and identify the quality of services provided by real estate professionals who are members of CREA. REALTOR®. Member of CREA and more.

Listing information last updated on October 15th, 2025 at 4:46pm CDT