

\$679,000 - 5480 Highway 620, Wollaston

MLS® #X12399722

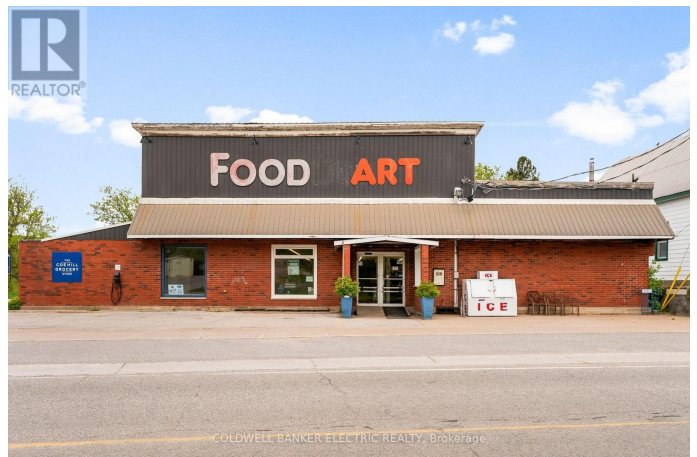
\$679,000

0 Bedroom, 1.00 Bathroom, 6,000 sqft

Business on 0.49 Acres

Wollaston, Wollaston, Ontario

Here's your chance to own a piece of Coe Hill history! For decades, the Coe Hill Grocery Store has been a cornerstone of this vibrant community and now it's ready for its next chapter. Extensively renovated, the property is impeccably maintained and equipped with modern upgrades, including brand-new refrigeration displays with condenser units and a high-efficiency heat pump for year-round comfort. The clean, dry basement and spacious delivery bay provide excellent storage and operational convenience. Looking to operate a business other than a grocery store? The flexible zoning offers ample opportunity for a wide variety of uses - from a take-out counter or caf, to LCBO retail, and beyond. The property also features an on-site EV charger, adding a valuable modern amenity for customers. With the option for potential living quarters, its perfectly suited for an owner-operator or on-site management. This is more than just a business, it's a versatile investment in a thriving community with unlimited entrepreneurial potential! (id:6289)



Essential Information

Listings #	X12399722
Price	\$679,000
Bathrooms	1.00
Square Footage	6,000

Acres	0.49
Type	Business

Community Information

Address	5480 Highway 620
Subdivision	Wollaston
City	Wollaston
Province	Ontario
Postal Code	K0L1P0

Amenities

Amenities	Highway
Features	Irregular lot size

Interior

Heating	Other
Cooling	Fully air conditioned

Listing Details

Listing Office	COLDWELL BANKER ELECTRIC REALTY
----------------	---------------------------------



The trademarks MLS®, Multiple Listing Service® and the associated logos are owned by The Canadian Real Estate Association (CREA) and identify the quality of services provided by real estate professionals who are members of CREA. REALTOR®. Member of CREA and more.

Listing information last updated on October 13th, 2025 at 9:16am CDT