

# \$715,000 - 8 Greenfield Place, Wilmot

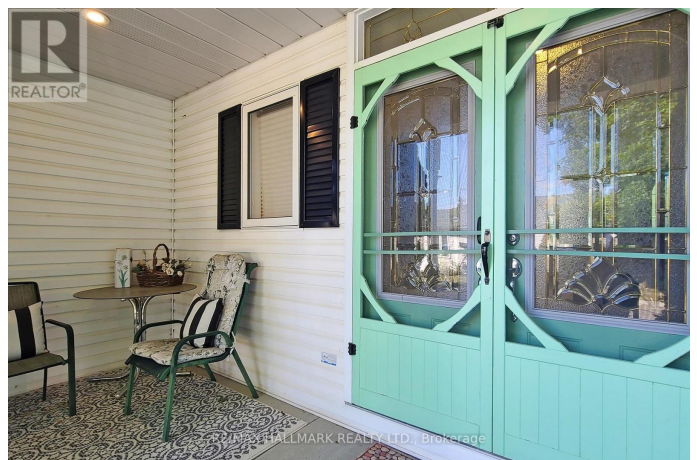
MLS® #X12400801

**\$715,000**

2 Bedroom, 2.00 Bathroom,  
Single Family

N/A, Wilmot, Ontario

S-P-R-E-A-D OUT in rarely offered, largest bungalow model in Morningside community 1533 square foot "Kent model" with unique double car garage and full basement with 8 ft. ceilings. Senior living personified in low maintenance, vibrant over 50 community. Downsizing made easy with lots of space for everything only 1hr. to 1 hr. 40min. from Toronto area, in Wilmot, New Hamburg area. Impressive double entrance doors with transom window above brings natural light into main entrance area, with main floor laundry and linen closet conveniently tucked away. Steps to huge living room with formal dining area and strategic, unobstructed view of the street. Open concept light filled kitchen with center island, breakfast area, and Florida sun room with 2 skylites, floor to ceiling windows making perfect for entertaining in style. Bonus from the sun room, step out to private deck with s/e exposure + retractable awning - perfect for enjoying morning coffee or evening relaxation on the front sitting area with manicured landscaping- great curb appeal. Designed for comfort with 2 large bedrooms with 3pc. Bath close by or primary with 4 pc. Ensuite, walk-in closet and large wall closet for most lavish wardrobes. Easy entrance to basement thru the garage with walkdown steps to unfinished bsmt. Tons of potential for private gym, workshop, craft room, wine cellar, or playroom for grandchildren. R/I plumbing for bathroom. Morningside community lies on over



120 acres of tall trees, and sweeping lawns, homes nestled on winding streets. Residents enjoy extensive amenities from indoor pool, fitness room, woodworking, huge library, shuffleboard, horseshoes, gardening plots, billiards, yoga, etc. Walking trails beside the Nith River which runs along the property. Close to Hwy#8 - Kit-Waterloo, Stratford nearby. Shopping in town of New Hamburg. Close to Mennonite community with fresh produce markets. (id:6289)

### Essential Information

Listing #	X12400801
Price	\$715,000
Bedrooms	2
Bathrooms	2.00
Type	Single Family
Sub-Type	Freehold
Style	Bungalow

### Community Information

Address	8 Greenfield Place
Subdivision	N/A
City	Wilmot
Province	Ontario
Postal Code	N3A2G6

### Amenities

Amenities	Park
Utilities	Cable, Electricity, Sewer
Features	Wooded area, Sump Pump
Parking Spaces	4
Parking	Attached Garage, Garage
# of Garages	2

### Interior

Appliances	Garage door opener remote(s), Water Heater, Water softener, Blinds, Dishwasher, Dryer, Freezer, Microwave, Stove, Washer, Window
------------	--

	Coverings
Heating	Natural gas Forced air
Cooling	Central air conditioning
# of Stories	1

## Exterior

Exterior	Vinyl siding
Exterior Features	Landscaped
Foundation	Poured Concrete

## Listing Details

Listing Office RE/MAX HALLMARK REALTY LTD.



The trademarks MLS®, Multiple Listing Service® and the associated logos are owned by The Canadian Real Estate Association (CREA) and identify the quality of services provided by real estate professionals who are members of CREA. REALTOR®. Member of CREA and more.

Listing information last updated on October 15th, 2025 at 2:01pm CDT