

\$399,900 - 155 Shelley Drive, Greater Sudbury (sudbury)

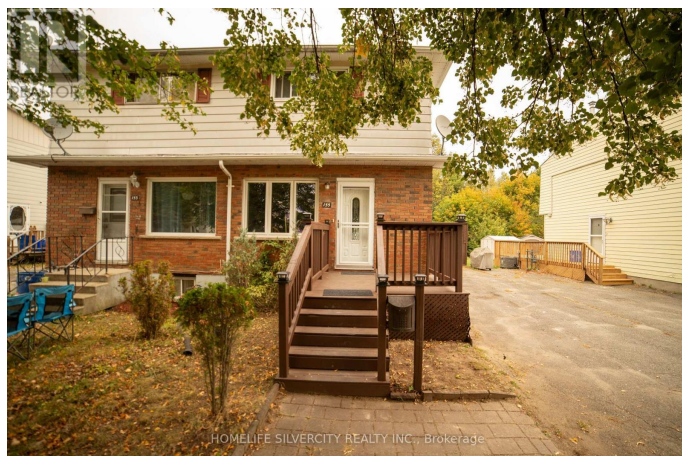
MLS® #X12419205

\$399,900

3 Bedroom, 2.00 Bathroom,
Single Family

Sudbury, Greater Sudbury (sudbury), Ontario

Welcome to fully renovated 155 Shelley Drive, a charming semi-detached home in the heart of New Sudbury just minutes from Cambrian College Easy access for students to rent, the New Sudbury Shopping Centre, and many other amenities. The main floor features an updated eat-in kitchen with patio doors to the deck, and a spacious living room filled with natural light. Upstairs you'll find three bedrooms and a full bathroom, offering plenty of space for the family. The basement offers great space with a separate entrance and renovated full bathroom, making it ideal for a bachelor apartment or additional living space. Outside you'll enjoy a mostly fenced yard with storage shed and plenty of parking in the driveway. Recent updates include new flooring, New paint, updated upper bathroom and updated siding , plus efficient gas forced-air heating. Don't miss out on this versatile homebook your showing today! (id:6289)



Essential Information

Listing #	X12419205
Price	\$399,900
Bedrooms	3
Bathrooms	2.00
Type	Single Family
Sub-Type	Freehold

Community Information

Address	155 Shelley Drive
Subdivision	Sudbury
City	Greater Sudbury (sudbury)
Province	Ontario
Postal Code	P3A2S6

Amenities

Features	Carpet Free
Parking Spaces	3
Parking	No Garage

Interior

Heating	Natural gas Forced air
Cooling	Central air conditioning
# of Stories	2
Has Basement	Yes

Exterior

Exterior	Brick, Vinyl siding
Foundation	Concrete

Listing Details

Listing Office	HOMELIFE SILVERCITY REALTY INC.
----------------	---------------------------------



The trademarks MLS®, Multiple Listing Service® and the associated logos are owned by The Canadian Real Estate Association (CREA) and identify the quality of services provided by real estate professionals who are members of CREA. REALTOR®. Member of CREA and more.

Listing information last updated on October 14th, 2025 at 6:33pm CDT