

\$3,000 - 47 Blacksmith Drive, Woolwich

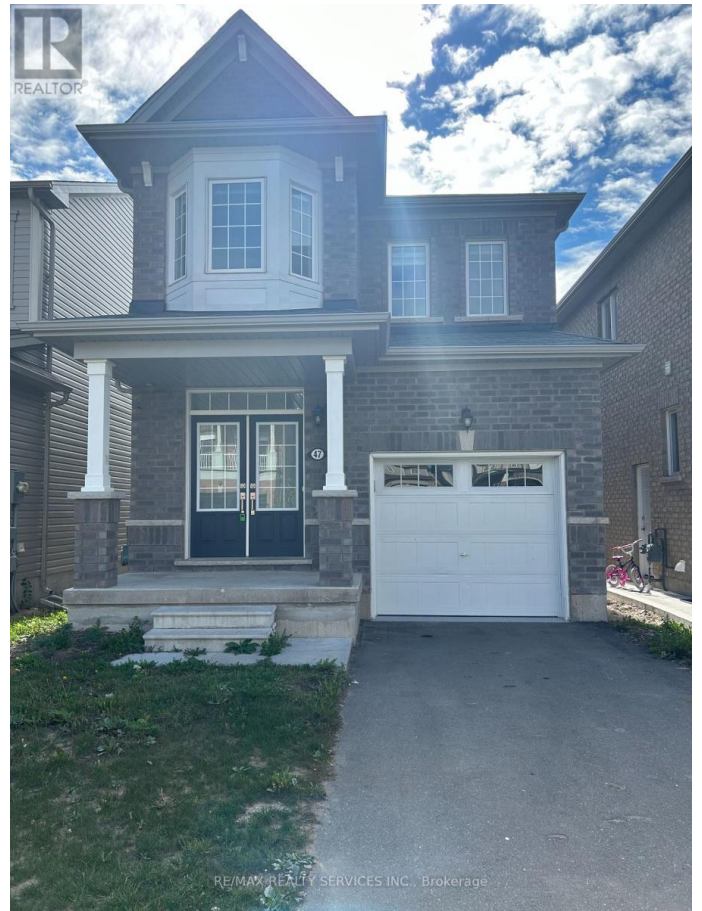
MLS® #X12436566

\$3,000

3 Bedroom, 3.00 Bathroom,
Single Family

N/A, Woolwich, Ontario

Absolutely Stunning Fully Detached 3 Bed, 3 Bath In The Lovely Empire Riverland Community & Elementary School Plus Community Centre. This Home Is Fully Loaded. Brick Model, Completely Upgraded W/ Double Door Entry, 9' Ceiling On Main level, Spacious Great Room, Stainless Steel Kitchen Appliances, Oak Staircase, Hardwood Floors Throughout the main level, Master Bedroom With 4Pc Ensuite & Walk-In Closet, 2nd Floor Laundry. (id:6289)



Essential Information

| | |
|------------|---------------|
| Listing # | X12436566 |
| Price | \$3,000 |
| Bedrooms | 3 |
| Bathrooms | 3.00 |
| Half Baths | 1 |
| Type | Single Family |
| Sub-Type | Freehold |

Community Information

| | |
|-------------|---------------------|
| Address | 47 Blacksmith Drive |
| Subdivision | N/A |
| City | Woolwich |
| Province | Ontario |
| Postal Code | N0B1M0 |

Amenities

| | |
|----------------|---|
| Parking Spaces | 2 |
|----------------|---|

Parking Attached Garage, Garage
of Garages 2

Interior

Heating Natural gas Forced air
Cooling Central air conditioning
Fireplace Yes
of Stories 2

Exterior

Exterior Brick
Foundation Brick, Concrete

Listing Details

Listing Office RE/MAX REALTY SERVICES INC.



The trademarks MLS®, Multiple Listing Service® and the associated logos are owned by The Canadian Real Estate Association (CREA) and identify the quality of services provided by real estate professionals who are members of CREA. REALTOR®. Member of CREA and more.

Listing information last updated on October 12th, 2025 at 7:31pm CDT

